

Visual PCE

The graphical Userinterface for the DOC1/PCE-Syntax

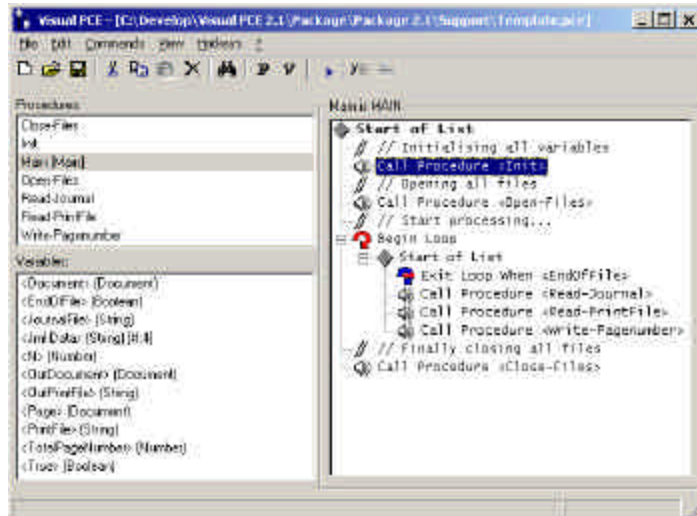
DOC1/PCE is without doubt one of the important and most flexible parts of the DOC1 document formatting solution .

But with any programming language that you code with a text editor, the biggest disadvantage is the the programmer need to know every command and its syntax by heart. This is not only to new but also to part time users a big lack.

Visual PCE is an additional software, that directly sits on DOC1/PCE applications and is 100% compatible with the syntax of DOC1/PCE.

The DOC1/PCE sourcecode will be developed with a GUI which has the look and feels of DOC1's 'Application Layout Editor '.

The Userinterface is besides the standard functions like icon menu and hotkeys divided into three parts. On one hand the is the list with all declared procedures. Below you find a list of all declared variables. Next to these lists is the commandwindow in which the programming for the opened procedure will be done.



Visual PCE reads scripts that have been written before and runs thru a variety a checks as i.e. variable existance and syntax checks.

Beyond that Visual PCE supports you with virtual variable types. This functionality lets you disclose variables in certain commands that are unnecessary to display. This rapides and makes setting up an application much easier.

Further functions, like testing the new script (assumes a DOC1/PCE license for WindowsNT) are also implemented just like drag&drop or search functionality. Visual PCE also provides options to export script pieces (so called snippets) for other scripts. Without question that when importing these snippets all necessary checks on syntax and variables will be done.

To obtain a demo version download Visual PCE from our website www.L-en-K.nl. Please contact us for the necessary license file.